

REAR WINDSHIELD - POLARIS RANGER 570 SP

50-55336KIT

SEIZMIK[®]

HIGHLIFTER

SEIZMIK[™]

FALCON RIDGE

SNORKEL YOUR ATV

SYSTEM 3
OFF-ROAD
Traction. Strength. Style.

EPI
PERFORMANCE

 service@seizmik.com

 1-866-838-3366
between 9:00 AM and 5:00 PM EST.



www.seizmik.com/customer-support

Parts Available For These Popular Brands and Others

POLARIS

can-am



HONDA

Kawasaki

YAMAHA

Seizmik® is the leader in designing and manufacturing Windshields, Mirrors, Cab Systems, Racks, and other premium accessories engineered to maximize your vehicle's performance and versatility.



Familiarize yourself with all the steps before beginning installation.

KIT CONTENTS

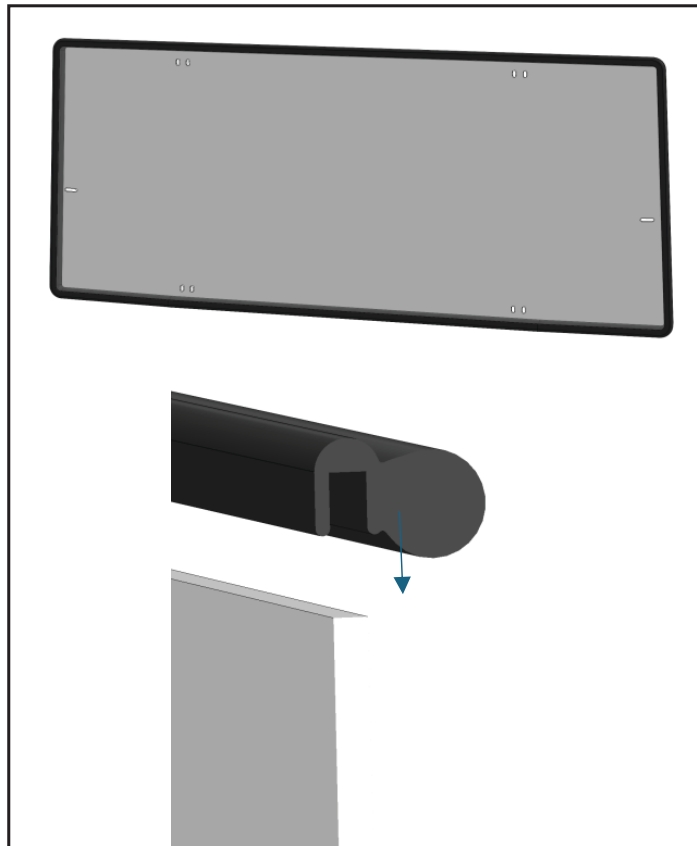
ITEM	PART #	Description	QTY
	50-55336	Ranger 570 Rear Windshield Panel	1
	54-90069	Ranger 570 Rear Windshield Gasket, 134.35 inch	1
	54-90132	Pro Fit Windshield Clamp Assembly	2
	54-90135	Nylon-Insert Locknut, M6 x 1mm	8
	54-90147	Lower Bracket	2
	54-90146	Upper Bracket	2
	54-96418	Screw, M6-1 x 20MM	8

WINDSHIELD INSTALLATION INSTRUCTIONS

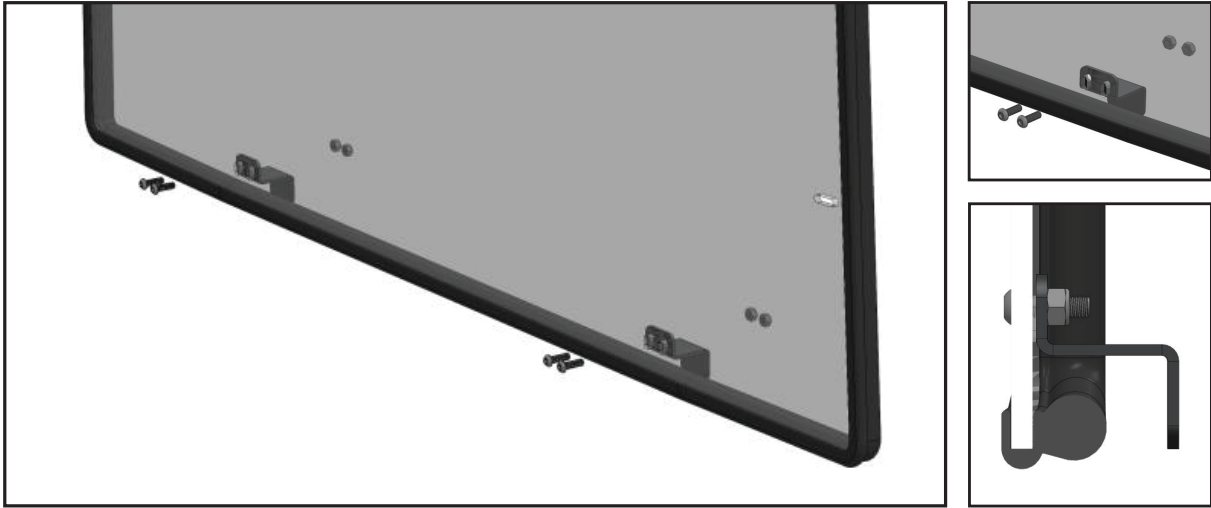
1. Slide the pocket at the bottom of the windshield protector over the bottom edge of your windshield.



2. Install the gasket around the full perimeter of the windshield.
 - It does not matter about the orientation on the polycarbonate, but when complete the bulb side will be the inside of the windshield.
 - Trim access to gasket if needed.



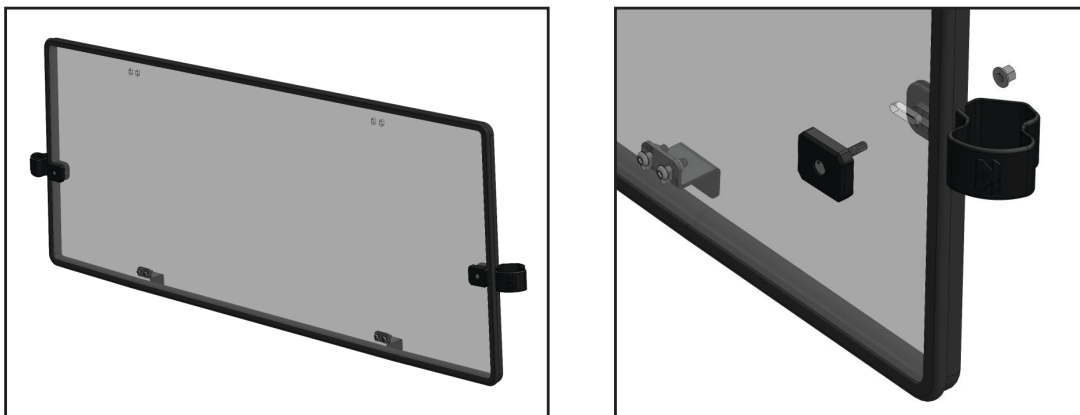
3. Install the lower brackets. Make sure the bracket is installed on the windshield side with the gasket bulb.
- Align the lower brackets to the bottom slotted holes.
 - Secure the bracket with the M6 Screw and M6 nut(s) provided.



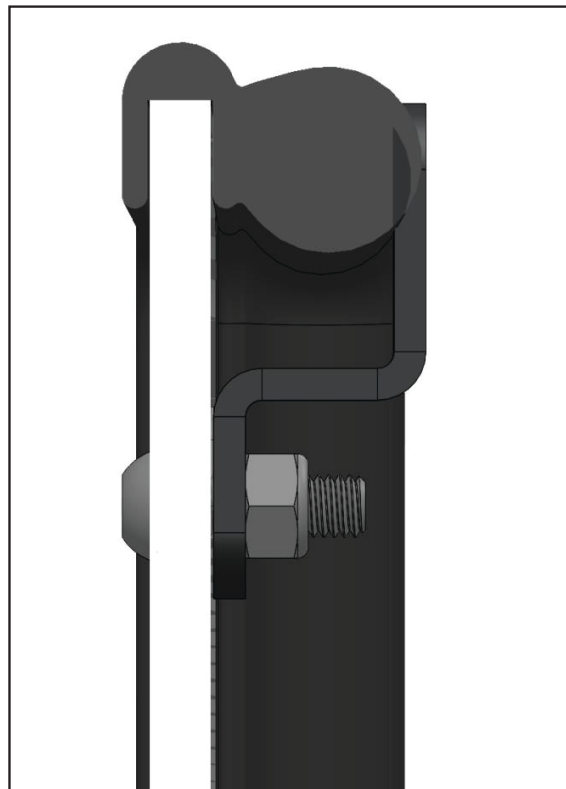
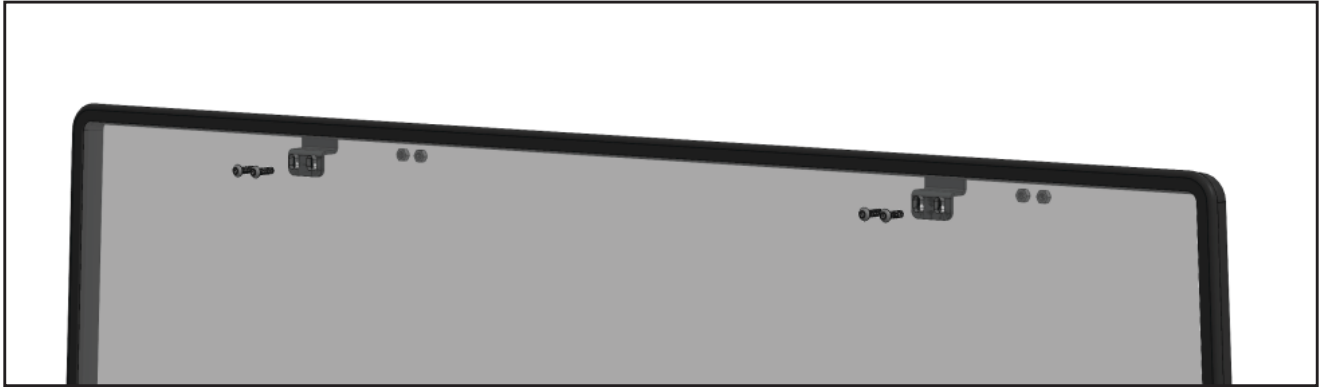
4. Open the clamp and place around roll cage with the SZ logo facing backwards as shown. This will need to be done to both sides.



5. Grab the windshield with the bulb on the gasket facing towards the inside of the machine.
- Place the windshield within the opening of the machine. The lower windshield brackets will fall over the lower support piece on the machine.
 - Line the center slots in the windshield with the slots in the clamp. Pass the bolt and backer through the windshield and clamp and loosely tighten with lock nut.



6. Install the Upper clamps.
 - Align the Upper brackets to the bottom slotted holes.
 - Secure the bracket with the M6 Screw and M6 nut(s) provided.



7. Snug up all hardware once the windshield is centered.

INSTALLATION COMPLETE

1-YEAR WARRANTY

Your purchase is protected by a 1-year warranty against manufacturer defects and workmanship issues.

Need help, missing a part, or have a question? Visit www.seizmik.com/customer-support or email us at service@seizmik.com— we're here to help!